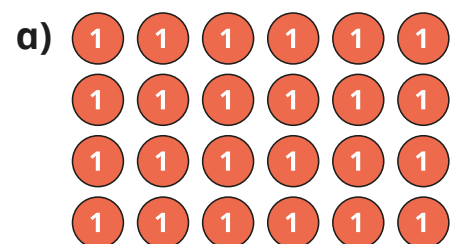


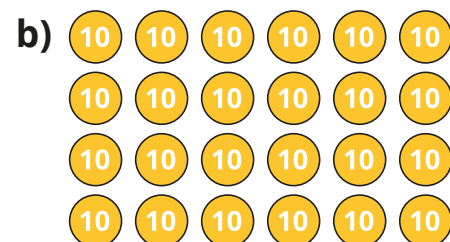
Related facts – multiplication and division

1 Complete the number sentences.



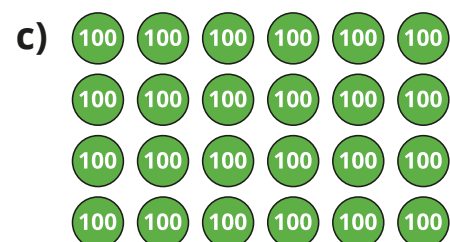
$$4 \times 6 \text{ ones} = \boxed{} \text{ ones}$$

$$= \boxed{}$$



$$4 \times 6 \text{ tens} = \boxed{} \text{ tens}$$

$$= \boxed{}$$



$$4 \times 6 \text{ hundreds} = \boxed{} \text{ hundreds}$$

$$= \boxed{}$$

2 Complete the calculations.

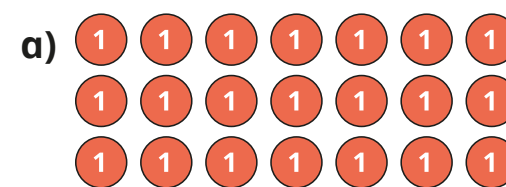
a) $5 \times 7 = \boxed{}$ $5 \times 70 = \boxed{}$ $5 \times 700 = \boxed{}$

b) $6 \times 3 = \boxed{}$ $6 \times 30 = \boxed{}$ $6 \times 300 = \boxed{}$

c) $8 \times 7 = \boxed{}$ $80 \times 7 = \boxed{}$ $800 \times 7 = \boxed{}$

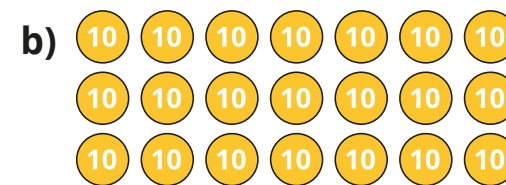
d) $12 \times 9 = \boxed{}$ $12 \times 90 = \boxed{}$ $12 \times 900 = \boxed{}$

3 Complete the number sentences.



$$21 \text{ ones} \div 7 = \boxed{} \text{ ones}$$

$$= \boxed{}$$



$$21 \text{ tens} \div 7 = \boxed{} \text{ tens}$$

$$= \boxed{}$$



$$21 \text{ hundreds} \div 7 = \boxed{} \text{ hundreds}$$

$$= \boxed{}$$

4 Complete the calculations.

a) $36 \div 4 = \boxed{}$ $360 \div 4 = \boxed{}$ $3,600 \div 4 = \boxed{}$

b) $56 \div 7 = \boxed{}$ $560 \div 7 = \boxed{}$ $5,600 \div 7 = \boxed{}$

c) $72 \div 9 = \boxed{}$ $720 \div 9 = \boxed{}$ $7,200 \div 9 = \boxed{}$

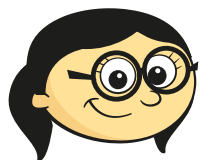
5 A train journey is 60 km long.
The train completes the journey 7 times.
How far has the train travelled in total?

$\boxed{}$ km

- 6 A school raises £2,400 at a fundraiser.
They decide to share the money equally between 3 charities.
How much money does each charity receive?

£

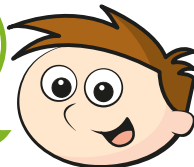
- 7 Teddy is working out 9×700
Annie is working out 7×900



900 is greater than 700, so my total will be greater.

Annie

I have more groups, so my total will be greater.



Teddy

Who do you agree with? _____

Explain your reasons.

8

$$9 \times 3 = 27$$

Write six other facts you can work out from this number sentence.

- 9 Write $<$, $>$ or $=$ to compare the calculations.

a) 700×4 7×40

b) 6×300 600×3

c) $63 \div 7$ $630 \div 7$

d) $2,400 \div 4$ $2,400 \div 6$

e) 70×4 7×400

f) 5×40 $200 \div 4$

- 10 There are 3 machines making toys in a factory.
Each machine makes 400 toys in a day.
The toys are then packed into 6 containers.
How many toys will there be in each container?

